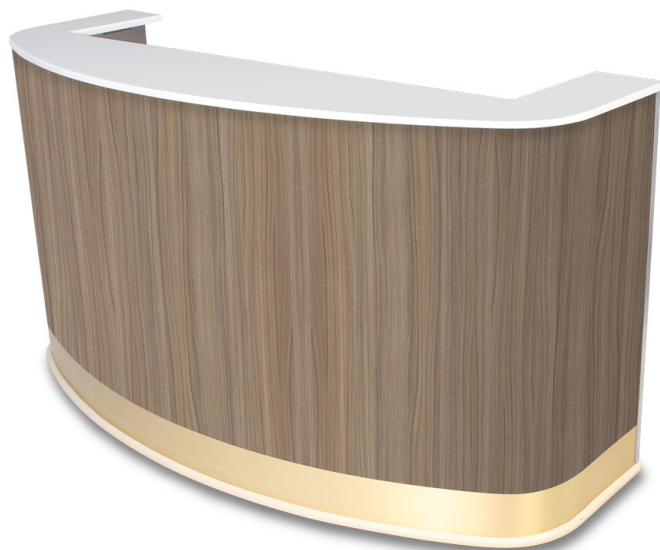


THE MARTINI BAR - 4872

SKU: 4872

ADDITIONAL INFORMATION



Dimensions

Length: 84", Width: 32.5", Height: 48.25"

Bar Length

6'

Features

Concealed Casters, HPL Cabinet, Standard Solid Surface Countertop, Wrap Around Bumper

Material

Laminate

Style

Contemporary, Modern

Countertop

Alpine Shimmer, Alaskan Stone, Cream, New Concrete, Adobe, Gray Granite, Star Shine, Cascade Beige Upgrade, Cascade Black Upgrade, Marelinho Upgrade, Slate Grey Upgrade, Venato Champagne Upgrade, Venato Stella Upgrade, White Crystal Terrazzo - Upgrade, Perla Bianca Terrazzo - Upgrade, Dove Tail Terrazzo - Upgrade, Black Crystal Terrazzo - Upgrade, Statuario Porcelain - Upgrade, Manor White Porcelain - Upgrade, Onyx Galaxy Porcelain - Upgrade, Chromium Porcelain - Upgrade, Stonewall Coal Porcelain - Upgrade, Obsidian Porcelain - Upgrade



Laminate Color

Chalk White, Ice Fishin, Negotiating in Geneva, Cookies & Cream, Cavalcade South, Simplicity, Wedding Cake, Aurora Oak, Looks Likatre, Macadamia Nut, Maple, Light Oak, Medium Oak, Appalachian Walnut, Sunrise Cedar, Cherry, Seems Likatre, Continental Walnut, Chocolate Malt, Twilight Oak, Walnut, Mahogany, Thunderstorm, Witchcraft, Ingot Gray, First N Main, Suede, Lunar Legno, Midnight Cedar, Textured Black, Ashwood Textured Black – Upgrade, Glossy Calcutta Marble – Upgrade, Evolution Textured Hedgerow – Upgrade, Evolution Textured Polar Cap – Upgrade, Glossy Pyrenees Marble – Upgrade, Evolution Textured Upland Stone – Upgrade

The Martini Mobile Bar features a signature curved design with a premium solid surface countertop and integrated double sink. Built for both style and efficiency, it delivers a refined front-of-house appearance with a fully functional back-of-house workspace. Countertops available in Standard Solid Surface only (Terrazzo and Porcelain are available with metal or wood Trim. Call for details.)

- Elegant curved front design for elevated presentation
- Avonite solid surface countertop (Alpine Shimmer finish)
- Integrated double sink positioned for optimal workflow
 - Aurora Oak HPL exterior for a warm, modern look
 - Three glass rack slides in left cabinet
 - Open storage compartment in right cabinet
 - Brushed metallic bronze accent base trim
 - Full wrap-around protective bumper (black)
 - Heavy-duty 5" NSF-rated casters for mobility
 - Compact footprint with efficient internal layout

VARIATIONS



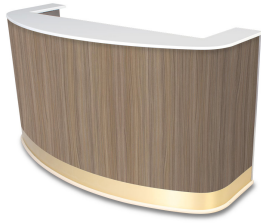


Image

Description

Countertop

Laminate Color



Any Countertop

Any Laminate Color

